



Open possibilities.



Schlage **Medio Series**
Modern styles for everyday living.

Enhance your home's architectural elements with the Schlage Medio range **of modern, contemporary door furniture.**



Sierra

(shown with privacy)

Blending contemporary styling with uncompromised quality, the Medio Series is designed for everyday living. Reflect your own unique design style with a choice of five architecturally inspired levers to complement your modern interior design.



QuickFix™

For speed and ease of installation the Schlage Medio Series features new QuickFix™ technology.

Visit allegion.co.nz/quickfix for more information.



Sleek design

- Five modern lever designs
- Built-in privacy push-button for ease of use
- Concealed through fixed screws

Faster, easier installation

- Features new QuickFix™ technology – install door lever in under 30 seconds*
- All levers are non-handed
- Can be used with Schlage tubular latches, ME series mortice locks or 990 series mortice locks**
- Centra lever is AS1428:1-2009 compliant

Durable construction

- Lever and rose constructed of high purity zinc alloy
- High quality electro plated finishes

Specifications

Material

- Zinc die cast lever and rose
- Brass cap

Warranty

- 10 year mechanical
- 10 year finish for Satin Chrome Plate
- One year finish for Aged Brushed Copper & Matt Black

Door thickness

- Latch Furniture - 30mm to 55mm
- Passage set - 30mm to 50mm
- Privacy set - 30mm to 42mm

Door preparation

- 25mm for passage and privacy

Backset

- 60mm for passage and privacy

Functions

- Latch furniture, passage, privacy and dummy trim

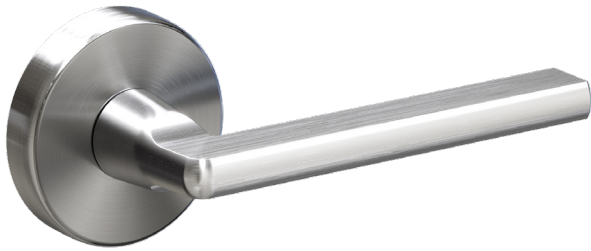
Accessories

- Universal rebate kit & escutcheons

* After installation of the latch and strike.

** Not to be used in commercial applications or on doors with closers.

Levers



Alba
● SCP



Centra
● SCP



Rivera
● ABC ● MB ● SCP



Sierra
● ABC ● MB ● SCP



Stella
● SCP

Common pairing



Cavity slider
● ABC ● MB ● SCP



Wall mounted door stop*
● ABC ● MB ● SSS



Door viewer
● MB ● SCP



Flush pull
● ABC ● MB ● SSS

*Floor mounted door stop also available



Open possibilities.

We believe that **style lives in the details**, because it's the details that bring everything together in a home.

Our door hardware, deadbolts and electronic locks provide **open possibilities** for homeowners to reflect their style.

Every day, Schlage creates solutions that bring our customer's visions to life. These solutions make homes and lives **smarter, safer and more beautiful.**

At the end of the day, **we're opening a lot more than just doors.**

Discover more at schlage.com.au or schlage.co.nz



Allegion (Australia) Pty Ltd

Freephone 1800 098 094

Email auinfo@allegion.com

www.allegion.com.au

Allegion (New Zealand) Limited

Freephone 0800 477 869

Email nzinfo@allegion.com

www.allegion.co.nz

About Allegion™

Allegion (NYSE: ALLE) is a global pioneer in safety and security, with leading brands like Brio®, FSH®, Gainsborough, Legge®, Schlage® and Von Duprin®. Focusing on security around the door and adjacent areas, Allegion produces a range of solutions for homes, businesses, schools and other institutions. Allegion is a \$2.4 billion company, with products sold in almost 130 countries.

